



PRIYABLUE SHIPPING PVT. LTD

Specifications Of Priya Twenty-Five



INDEX

- VESSEL CHARACTERISTICS
- SALIENT FEATURES
- GA PLANS



VESSEL CHARACTERISTICS



PRIYA TWENTY FIVE

GENERAL	
NAME OF VESSEL	: PRIYA TWENTY FIVE
TYPE OF VESSEL	: AHTS / FFSV
FLAG / PORT OF REGISTRY	: INDIA / MUMBAI
CLASSIFICATION SOCIETY	: INDIAN REGISTER OF SHIPPING
NOTATION	: SUL,"MUD & BRINE TANK OF SP.GR 2.5", "STRENGTHENED DECK", TUG/SUPPLY VESSEL, IY, AGNI 1 (2400 CUM/HR), AGNI 2 (7200 CUM/HR), DP (1), HLDK
YEAR OF BUILD	: 2007
DIMENSIONS	
LENGTH OVERALL	: 67 meters
BREADTH	: 15.40 meters
DEPTH	: 7 meters
GRT/ NRT	: 2072 / 719
DWT AT ASSIGNED DRAFT	: 2339.42
MACHINERY	
MAIN ENGINE	: 2 x Rolls Royce Bergen B 25:33 L8 P / Diesel Engine, Each 2610 KW (3550 BHP), Total 5220 KW (7100 BHP) 900 RPM
PROPELLER	: 2 x CPP in Kort Nozzle
RUDDER	: Trailing Flap Rudders
BOW THRUSTER	: 2 x Rolls Royce make, CPP driven by 800 BHP Electric motor ; 8 Tons Thrust each
STERN THRUSTER	: 1 x Rolls Royce make, CPP driven by 800 BHP electric motor, 8 tons thrust
GENERATORS	: 2 x 1200 kW shaft generators, 2 x 320 Kw
EMERGENCY GENERATOR	: CUMMINS INDIA LTD 1 x 105 HP @ 1500 RPM.

ANCHOR HANDLING & TOWING	
BOLLARD PULL	: 80 TONS
AHT WINCH	: Manabe Zoki-Twin drum with Spooling Gear, Line pull: 200 tons @ 10m/min on first layer
BRAKE CAPACITY	: 300 Tons
DRUM CAPACITY	: 64mm x 1500m Towing wire, 64mm x 1675m Anchor Handling wire.
CONTROL	: Local & Wheelhouse
SHARK JAW	: Triple H -200
TOWING PIN	: Triple S - 100
STERN ROLLER	: 1.5m dia x 3.6m length x 300 T SWL
HELIDECK	
D VALUE	: 18 METERS
T VALUE	: 5.6 TONS
COMPLIANCE	: DGCA REGULATIONS, CAP 437 STANDARDS
SUITABLE HELICOPTERS	: BELL 412, DAUPHINE N3, AW139
NIGHT LANDING	: AVAILABLE AS PER CAP 437 STABDARDS.
CCTV	: AVAILABLE WITH RECORDING FACILITY
NON DIRECTIONAL BECKON	: AVAILABLE
HAPI	: AVAILABLE



PRIYA TWENTY FIVE

CAPACITIES

DECK CARGO	: 700 Tons
CLEAR DECK SPACE	: 424 M2
DECK STRENGTH	: 5 Tons/ m2 (at stern 10 Tons / m2)
FUEL OIL	: 650 m3
BASE OIL	: 174 m3
DRILL / BALLAST WATER	: 290 m3
POTABLE WATER	: 770 m3
LIQUID MUD	: 380 m3
DRY BULK	: 200 m3 (4 Tanks)
FOAM TANK	: 150 m3 (2 Tanks, 75 m3 each)
DISPERSANT TANK	: 12 m3
FREEZER ROOM	: 10 m3
CHILLER ROOM	: 10 m3
PUMPING	
FUEL OIL	: 200 m3 / hr X 80m head
DRILL WATER	: 200 m3 / hr X 90m head
POTABLE WATER	: 200 m3 / hr X 80m head
BULK	: 2 Compressor, 23 m3 / min 5.6 kg / cm2
MUD PUMP	: 2 Pumps, 75 m3 / hr @ 18 bar
BRINE PUMP	: 75 m3 / hr @ 18 bar
BALLAST PUMP	: 200 m3 / hr X 90m head

ANTI - POLLUTION EQUIPMENT

OIL DISPERSANT SPRAY SYSTEM	: 2 X OIL DISPERSANT BOOMS, 4 M LENGTH, RIGID TYPE.
OIL CONTAINMENT BOOMS	: 500 METERS LENGTH, CAN BE SELF DEPLOYED
OIL RECOVERY SYSTEM	: SKIMMER UNIT WITH CAPACITY OF 500 M3/HR
INFLATABLE STORAGE TANKS	: 2 X 5 M3 EACH
ANCHOR & MOORING EQUIPMENTS	
ANCHORS	: 2 x 1570 Stockless HHP Anchors
CABLES	: 8 lengths In Each Chain Locker
HYDRAULIC WINDLASS	: 12 tons @ 16m/min/PCPLIMSOLI
HYDRAULIC TUGGER WINCH	: 2 x 12 T @ 8m/min , PLIMSOIL
CHAIN STOPPER	: 2 Nos.
ACCOMMODATION	
CREW	: 6 x 1 Men Cabin , 3 x 2 Men , 3 x 4 Men Cabin (Total 24 Person)
CHARTERER	: 4 X 4 Men (Total 16 Person)
TOTAL	: 40 Berths, Fully Air - Conditioned
HOSPITAL	: Available



PRIYA TWENTY FIVE

NAVIGATION & COMMUNICATION	
RADAR	: 2 x Furuno FR 2125 X & FR-2135-S
GPS	: 1 x JMC & 1 X FURUNO
ECO SOUNDER	: 1 X FURUNO
AUTO PILOT	: ANCHUTZ
GYRO	: RAYTHEON - Marine GmbH
GMDSS	: A1, A2 & A3
IMMARSAT	: F-77 THRANE & THRANE C- 2 X THRANE & THRANE
VHF / DSC	: 2 X SAILOR RT 5022 & 1 X SAILOR 6222
NAVTEX	: JMC NT 900
SPEED LOG	: FURUNO DS 80
S.S.B	: 1 X SAILOR CU 5100
Anemometer. P.A System, EPIRB & SART provided	
MISCELLANEOUS	
FRESH WATER GENERATOR	: SLCE France / Model : SD 11-403, 12 ton per day
SEWAGE TREATMENT PLANT	: Hamworthy, Model : ST 3A
CRANE	: CRANE 5 T @ 10 MTR - MAKE- PALFINGER (PORT SIDE) & CRANE 10 T (STARBOARD SIDE)
HELIDECK	: For Medium size Helicopters
DP SYSTEM	: Kongsberg System with 2 DGPS system, CPOS
FRC BOATS	: 1 Nos.
ZODIAC WORK BOATS	: 1 Nos.





SALIENT FEATURES



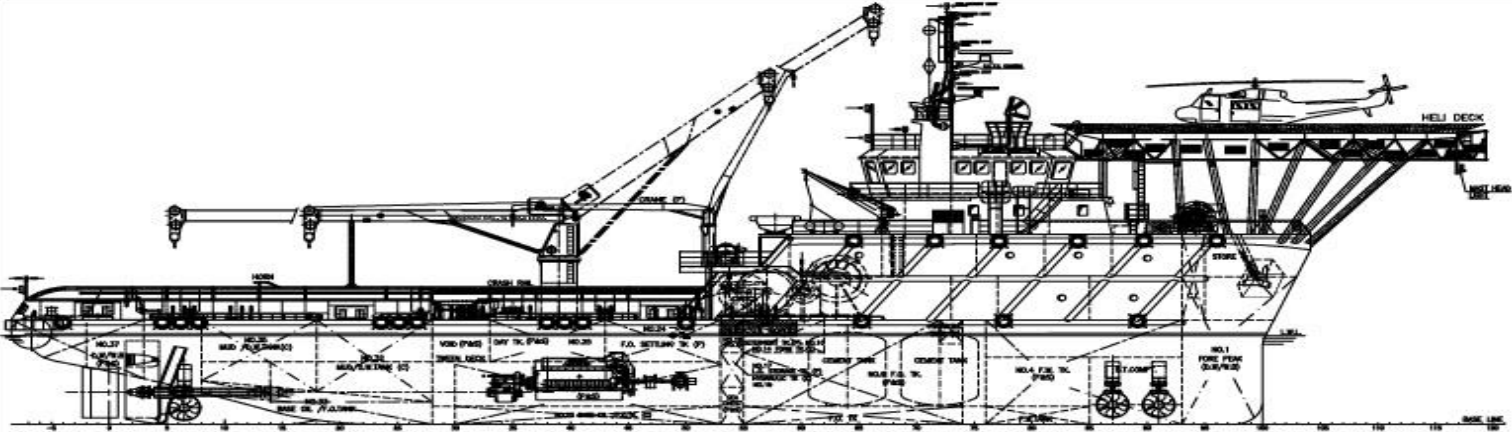
PRIYA TWENTY FIVE

- TYPE OF VESSEL – AHTS
- YEAR OF BUILT – 2006
- BOLLARD PULL – 80 TONS
- CLASSIFICATION – IRS
- DYNAMIC POSITIONING – DP CLASS I (UPGRADABLE TO CLASS II)
- FIRE FIGTHING – FIFI CLASS II
- ENGINE POWER – 7100 BHP
- PROPULSION – CPP IN KORT NOZZLE
- ACCOMODATION – 40 PAX
- HELIDECK WITH NIGHT LANDING FACILITY
- OIL SPILL RECOVERY CAPABILITIES

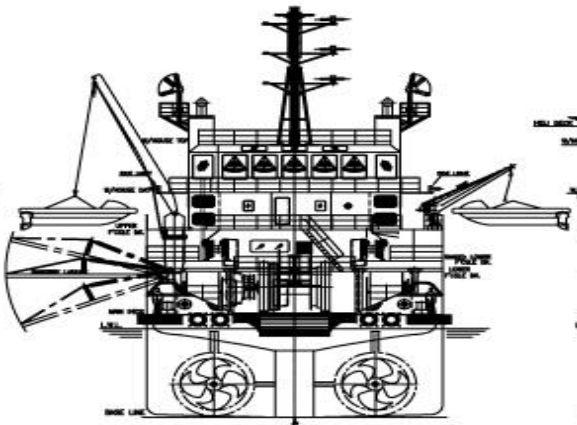


GENERAL ARRANGEMENT PLAN

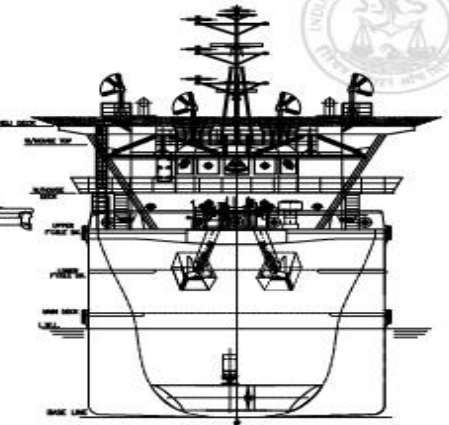




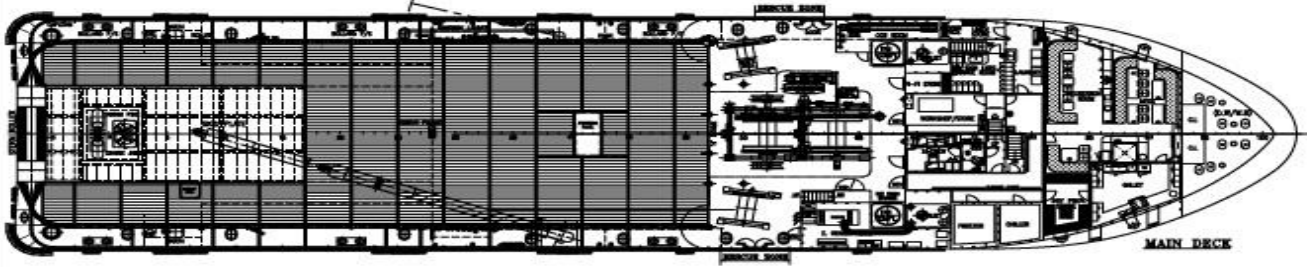
OUTBOARD PROFILE



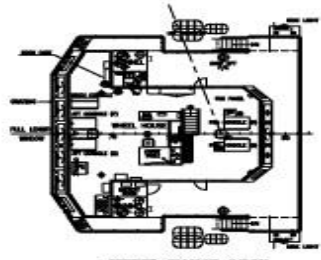
TRAWLER VIEW



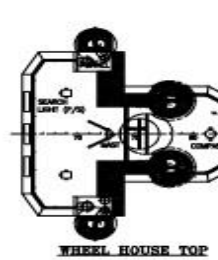
TOW BEHIND VIEW



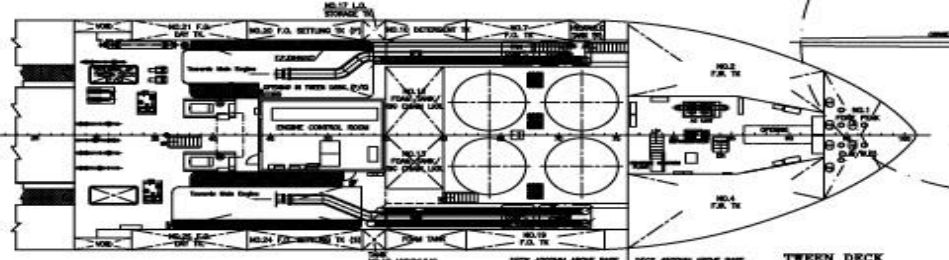
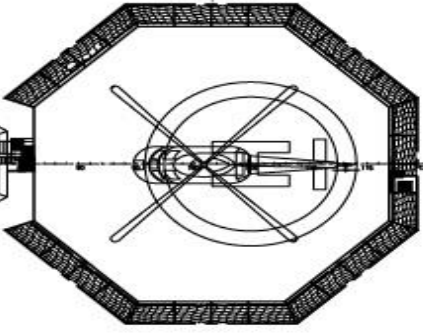
MAIN DECK



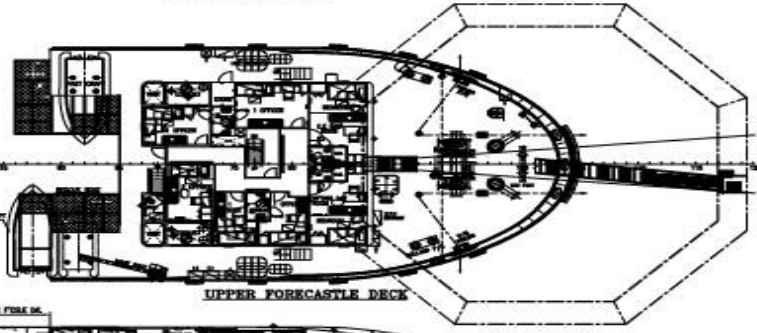
WHEEL HOUSE DECK



WHEEL HOUSE TOP

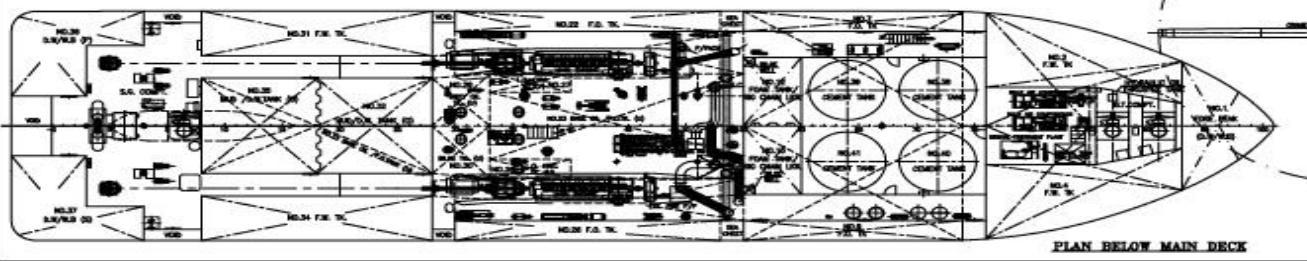


THIRD DECK

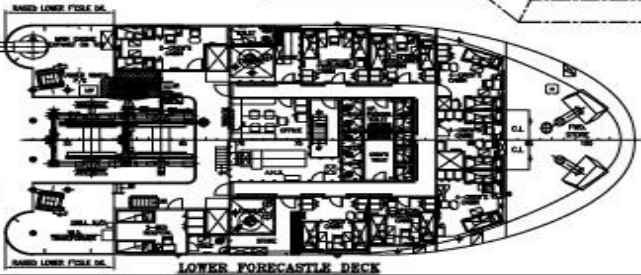


UPPER FORECASTLE DECK

REVISIONS	
NO.	DESCRIPTION
1	ISSUED FOR APPROVAL
2	ISSUED FOR APPROVAL
3	ISSUED FOR APPROVAL
4	ISSUED FOR APPROVAL
5	ISSUED FOR APPROVAL
6	ISSUED FOR APPROVAL
7	ISSUED FOR APPROVAL
8	ISSUED FOR APPROVAL
9	ISSUED FOR APPROVAL
10	ISSUED FOR APPROVAL



PLAN BELOW MAIN DECK



LOWER FORECASTLE DECK

REV	DESCRIPTION	DATE	MODIFY	APP'D
1	ISSUED FOR APPROVAL	14/07/20		
2	ISSUED FOR APPROVAL	14/07/20		
3	ISSUED FOR APPROVAL	14/07/20		
4	ISSUED FOR APPROVAL	14/07/20		
5	ISSUED FOR APPROVAL	14/07/20		
6	ISSUED FOR APPROVAL	14/07/20		
7	ISSUED FOR APPROVAL	14/07/20		
8	ISSUED FOR APPROVAL	14/07/20		
9	ISSUED FOR APPROVAL	14/07/20		
10	ISSUED FOR APPROVAL	14/07/20		

REVISIONS		DATE	MODIFY	APP'D
1	ISSUED FOR APPROVAL	14/07/20		
2	ISSUED FOR APPROVAL	14/07/20		
3	ISSUED FOR APPROVAL	14/07/20		
4	ISSUED FOR APPROVAL	14/07/20		
5	ISSUED FOR APPROVAL	14/07/20		
6	ISSUED FOR APPROVAL	14/07/20		
7	ISSUED FOR APPROVAL	14/07/20		
8	ISSUED FOR APPROVAL	14/07/20		
9	ISSUED FOR APPROVAL	14/07/20		
10	ISSUED FOR APPROVAL	14/07/20		

